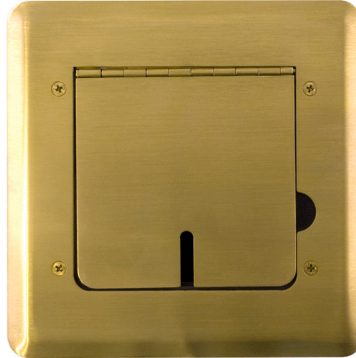


FMCA1000 series ordering guide

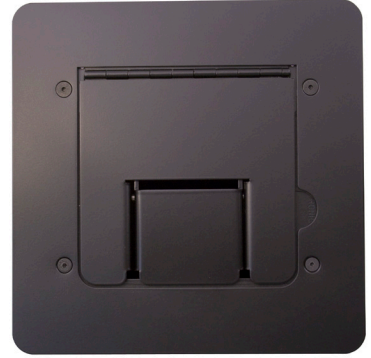
Step 1 Select cover material and trim options:



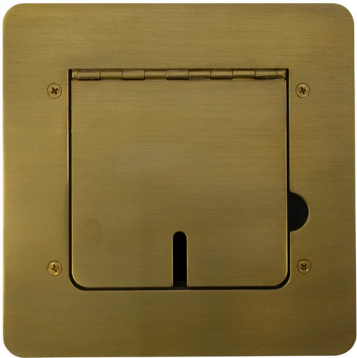
FMCA1000 Self-trimming, Satin black
1ea 1/4"x1" Cable slot



FMCA1100 Self-trimming, Solid brass
1ea 1/4"x1" Cable slot



FMCA1200 Flat trim for routing into
finished floor, Satin black 2.25" x 1.25"
Cable door



FMCA1300 Flat trim for routing into
finished floor, Solid brass
1ea 1/4"x1" Cable slot



FMCA1400 Self-trimming, Satin black
2.25" x 1.25" Cable door



FMCA1800 Self-trimming, Stainless
2.25" x 1.25" Cable door

Step 2 Select one insert panel type:



MPK
4ea Neutrik® D or
4ea SwitchCraft® D3F



MPJ
Punched for Extron AAP®



MPP
1ea Decora device



MP8
Blank insert panel



MPU
Punched for Extron MAAP®
and 2ea Neutrik® D



MPQ
2ea RJ11 or RJ45
connectors (Leviton
QuickPort® or compatible)



MPM
2ea Neutrik® D or
2ea SwitchCraft® D3F,
1ea VGA and 2ea pilot holes



MPL
Punched for 2ea
Extron MAAP®



MPR
Includes UL® Lised duplex
receptacle (120VAC-15A),
cover plate & all hardware
to connect to a power system

*For greater flexibility, MPK, MPM and MPU accept all Mystery Electronics FlexiConn system connectors. Consult website for additional panel offerings.

Step 3 Select optional construction rough in box:

BB1000 6"x6"x6" w/ 1/2" & 3/4" and 3/4" & 1" combo knockouts

Step 4 Specify optional connector types, labeling designation and load configuration

Additional information regarding the FMCA1000 series may be found on our website.

floor box solutions since 1979

MYSTERY 
ELECTRONICS, LLC
6438 Morton Road
Greenbrier, TN 37073
800 798 2256 sales
615 643 8460 voice
615 643 8464 fax
sales@mysteryelectronics.com

EB-A22-00