

RE: Installation instructions for Type V insert

The **Type V** insert can be used in any Mystery Electronics ModuLine Enclosure. Some models have only limited space behind the panel. When using RG6 and/or data grade standard coax cable, it is recommended that allowance be made to meet the cable manufacturers' minimum bend radius requirements.

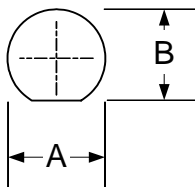
The **Type V** insert is pre-punched for five BNC connectors intended for applications having five separate signals for video such as; RGB, sync and composite; RGB, horizontal and vertical, etc.

For applications requiring audio connections, a 1/4" hole which will accommodate a stereo 3.5mm mini TRS connector is provided. Also the 1/4" hole and the provided pilot hole may be modified to 3/8" in order to accommodate applications requiring two RCA phono connectors.

The color-coded label is used to denote the signal type; red = R, green = G, blue = B, yellow = sync or vertical, white = composite or horizontal.

The **Type V** insert packaging contains three washers which **must** be used when mounting the **Type V** insert in order to protect the insert label. The washers install beneath the heads of the insert mounting screws provided with the enclosure hardware kits.

The hole pattern used on **Type V** inserts produced after Mar. 2004 is as follows:



	Inches	Millimeters
A	.506 (+.005 -.000)	12.852 (+.127 -.000)
B	.475 (+.003 -.000)	12.058 (+.076 -.000)

Any crimp style, solder tab, or feedthru (bulkhead) connector based on a single "D" hole with clearance for 1/2 - 28 UNEF threads is compatible with this hole pattern without field modification. The hole pattern accommodates the largest selection of BNC style connectors, available from a variety of manufacturers, and is generally considered a standard in the video and RF instrumentation industry.

Non-compatible connector brands or versions that use an insulated bushing system may require minor modification.

Compatible connectors are available from **Aim®**, **Amphenol®**, **Cambridge®**, **Canare®**, **Switchcraft®**, etc., and through electronic parts distributors in most markets.

BNC connectors may also be purchased directly from Mystery Electronics and loaded at an additional charge.

Note: The previous version of the Type V insert had a hole pattern for use with the color-code kit specified in Revision 1 of TechNote TN19. This hole pattern will be available as a special order ModuLine Plus insert until existing stock is depleted. If you need this earlier version please contact the order desk.